

GradyVet: DUS - 4200

The Future of Veterinary Ultrasound



Two Probe Connectors



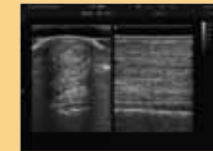
USB, DICOM



15"LCD

FEATURES

The DUS-4200 delivers superb image quality for multi-applications in small and large animals. With the advanced technologies of SRA & THI, it provides better contrast resolution, together with the professional VET probes and VET software, which greatly help the veterinarian to make accurate diagnosis. A work-flow oriented User Interface is built to allow user-friendly operation with minimum soft key entries.



Equine Tendon



Equine Spermatophore



Canine Bladder



Feline Liver



www.GradyMedical.com
Phone: 1.800.800.2585
Email: sales@gradymedical.com

DUS-4200 Probes



D7L40L - 7.5MHz Linear
Applications: Small animal ABD, OB, GYN, Cardiac



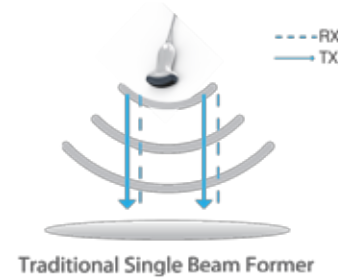
D3C60L - 3.5MHz Convex
Applications: Small animal ABD, OB, GYN, Cardiac



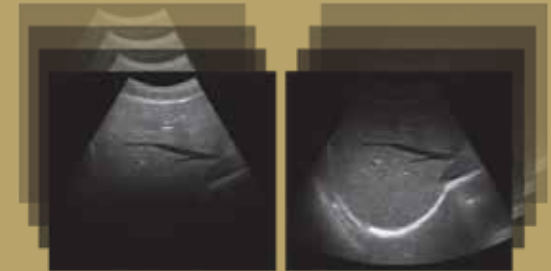
D6C15L - 6.0MHz Micro-Convex
Applications: Small animal ABD, OB, GYN, Cardiac



D5C20L - 5.0MHz Micro-Convex
Applications: Small animal ABD, OB, GYN, Cardiac



Compound Imaging



Before Compound imaging



After Compound imaging

The traditional Compound imaging technologies improve the image quality, but lose the frame rate, which affect diagnosis convenience and efficiency. Our Compound imaging has integrated multiple key factors like frequency, focus and time, but will not sacrifice the frame rate.



Various measurements



Detailed reports



EasyView image archive system

WORKFLOW

The multi-purpose user presets, comprehensive measurement & report system, built-in EasyView image archive system, quick image storage/retrieve/transfer, one-button direct print, makes the complete workflow better than what you can dream of.